

# THE CARMICHAEL *at Country Club Estates*

2 Story • 2,890 sq.ft.



Town & Country elevation shown with side-load garage.



Town & Country



Marketing Disclaimer: The renderings and visual media used in our marketing are for illustrative purposes only. They depict options and upgrades that are available to purchase but may not be included in the standard feature package. For a full list of our models, standard features and available options contact a member of our sales team. All plans and specifications are believed correct at time of publication, however accuracy is not fully guaranteed. All dimensions, sizes, and descriptions shown are approximate. Amedore Homes et al, reserves the right to revise content without notice or obligation.

©Amedore Homes, Inc 2013

518.456.1010  
amedorehomes.com

**Amedore** INC.  
**G R O U P**  
*Surround Yourself with Excellence!*

# THE CARMICHAEL at Country Club Estates

1.5 Story • 2,890 sq.ft. • 4 Bedrooms • 2.5 Baths • 1st Floor Master • Dining Room • Study • Opt. Loft Area • 3-

## First Floor

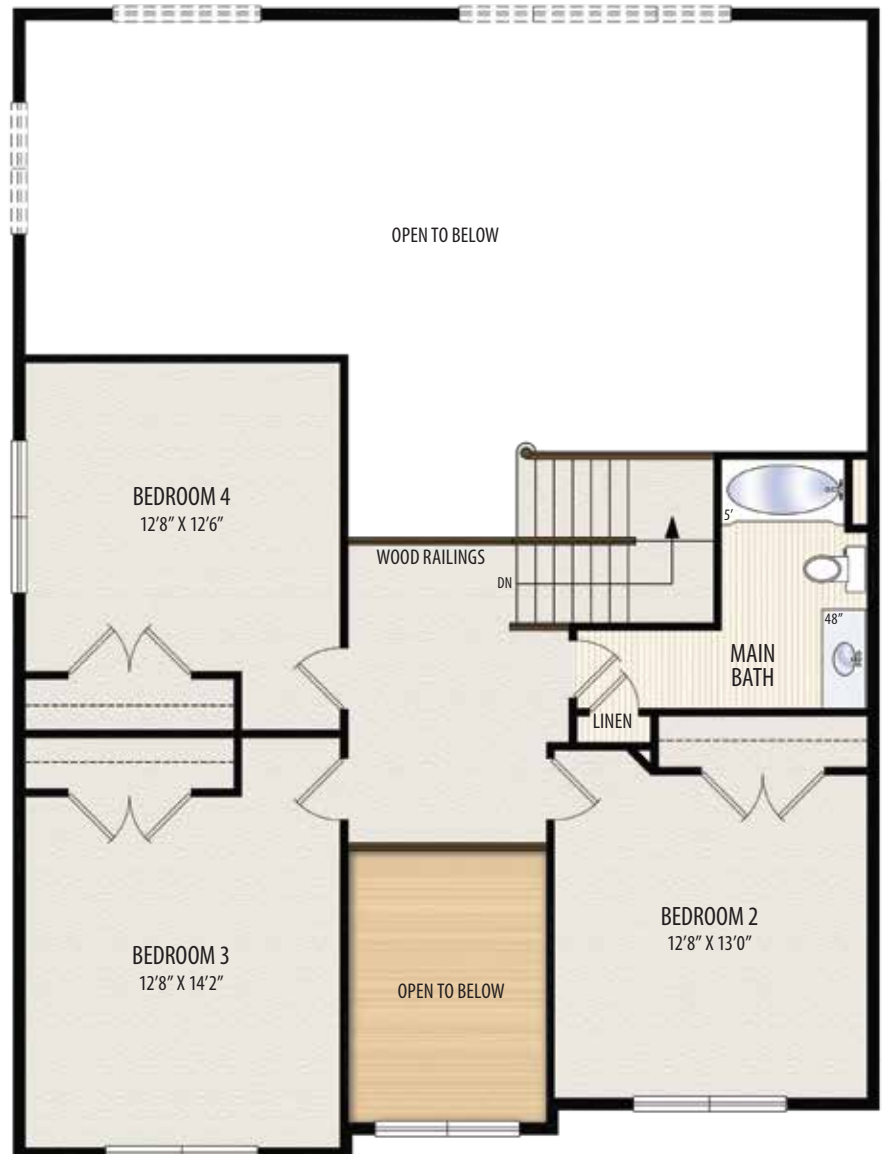
- Inviting two-story foyer.
- Gourmet kitchen and dinette with built-in pantry.
- Spacious two-story family room with gas fireplace.
- Private 1st-floor master suite with large walk-in closet.



Marketing Disclaimer: The renderings and visual media used in our marketing are for illustrative purposes only. They depict options and upgrades that are available to purchase but may not be included in the standard feature package. For a full list of our models, standard features and available options contact a member of our sales team. All plans and specifications are believed correct at time of publication, however accuracy is not fully guaranteed. All dimensions, sizes, and descriptions shown are approximate. Amedore Homes et al, reserves the right to revise content without notice or obligation.



**OPT. LOFT AREA**  
Additional 177 sq. ft.



***Second Floor***

- Balcony and stairs overlooking two-story family room.
- Large bedrooms with ample closet space.
- Optional loft area.

518.456.1010  
amedorehomes.com

# THE CARMICHAEL *at Country Club Estates*

1.5 Story • 2,890 sq.ft.



## *Features at a Glance*

A full listing of all included features is available in our *Country Club Estates Included Features* handout available from one of our Team.

- Efficient, Energy Smart construction.
- Estate Series landscaping package with underground lawn irrigation system.
- Brick OR cultured stone veneers on portions of front elevations.\*
- Fully framed, insulated basement walls.
- Side entry, 3-car garage\* with insulated garage door and service door.
- Garage sheetrocked with one coat of tape.
- 9ft. first floor ceilings.
- Pella® “Low-E” tilt-in, double-hung windows with screens and grills between glass on ALL windows.
- Heat-N-Glow® zero clearance, direct-vent gas fireplace with designer ceramic tile surround and custom built mantle.
- Oak tread staircase\* and solid oak flooring in foyer, kitchen, dinette area, and dining room.\*
- 8lb padding under all carpeted areas for an ultra-plush feel.
- Whirlpool® gourmet kitchen appliance package.
- Designer ceramic tile backsplash and granite countertops in the kitchen.
- Jetted-tub with designer ceramic tile backsplash in the master bathroom.\*
- Ceramic tile shower enclosure with sliding glass door in master bathroom.\*
- 6-year limited builder warranty.

*\*Per plan, and homesite.*



Marketing Disclaimer: The renderings and visual media used in our marketing are for illustrative purposes only. They depict options and upgrades that are available to purchase but may not be included in the standard feature package. For a full list of our models, standard features and available options contact a member of our sales team. All plans and specifications are believed correct at time of publication, however accuracy is not fully guaranteed. All dimensions, sizes, and descriptions shown are approximate. Amedore Homes et al, reserves the right to revise content without notice or obligation.

©Amedore Homes, Inc 2013

518.456.1010  
amedorehomes.com

**Amedore**★  
INC.  
**G R O U P**  
*Surround Yourself with Excellence!*